

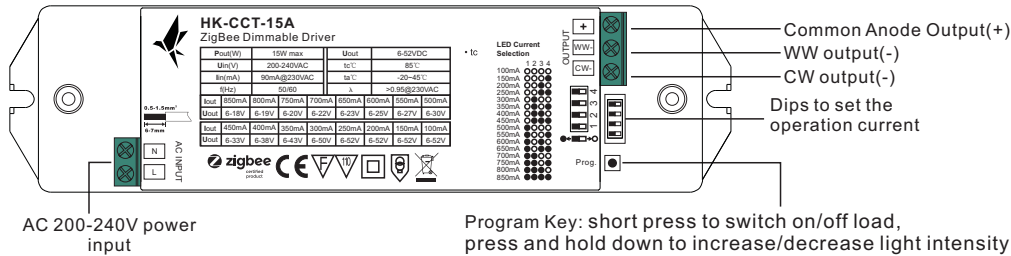
15W ZigBee CCT LED Driver(constant current)

70260002



Important: Read All Instructions Prior to Installation

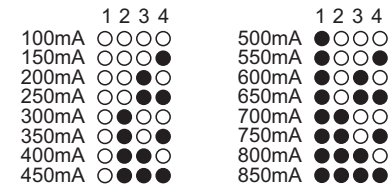
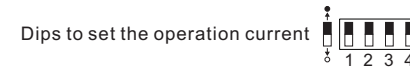
Function introduction



Safety&EMC	Safety Standards	ENEC EN61347-1, EN61347-2-13 approved
	Withstand Voltage	I/P-O/P: 3.75KVAC
	EMC Emission	EN55015, EN61000-3-2, EN61000-3-3
	EMC Immunity	EN61547, EN61000-4-2,3,4,5,6,8,11, surge immunity Line-Line 0.5KV
Others	MTBF	190500H, MIL-HDBK-217F @ 230VAC at full load and 25°C ambient temperature
	Dimension	178*46*22 mm (L*W*H)

Product Data

Output	Selectable Current	100mA	150mA	200mA	250mA	300mA	350mA	400mA	450mA	
	DC Voltage Range	6-52V	6-52V	6-52V	6-52V	6-50V	6-43V	6-38V	6-33V	
	Selectable Current	500mA	550mA	600mA	650mA	700mA	750mA	800mA	850mA	
	DC Voltage Range	6-30V	6-27V	6-25V	6-23V	6-22V	6-20V	6-19V	6-18V	
Rated Power		15W max.								
Input	Voltage Range	200-240V AC								
	Frequency Range	50/60Hz								
	Power Factor (Typ.)	> 0.95 @ 230VAC								
	Total Harmonic Distortion	THD ≤ 15% (@ full load / 230VAC)								
	Efficiency (Typ.)	85% @ 230VAC full load								
	AC Current (Typ.)	0.09A @ 230VAC								
	Inrush Current (Typ.)	COLD START 2A max. at 230VAC								
	Leakage Current	< 0.5mA /230VAC								
	Protection	Short Circuit	Yes, auto recovery after fault removed							
		Over Temperature	Yes, auto recovery after fault removed							
Environment	Working Temp.	-20°C ~ +45°C								
	Max. Case Temp.	85°C (Ta="45°C")								
	Working Humidity	10% ~ 95% RH non-condensing								
	Storage Temp. & Humidity	-40°C ~ +80°C, 10% ~ 95% RH								

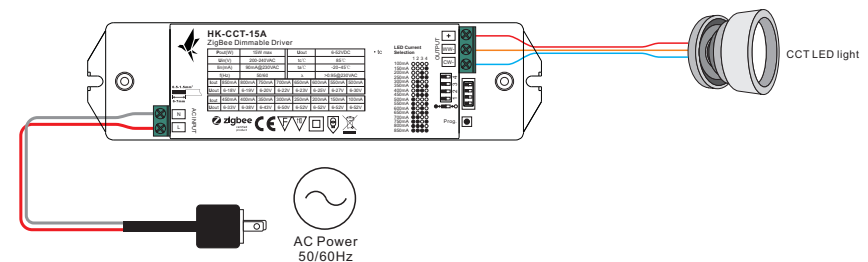


- Dimmable LED driver for tunable white
- ZigBee CCT LED light device based on ZigBee 3.0 protocol
- Max. output power 15W total
- 2 channels constant current output
- Output current 100-850mA adjustable by dip switches
- Class II power supply, full isolated plastic case
- Built-in active PFC function
- High power factor and efficiency
- Deep and smooth dimming to 1%, flicker free
- Suitable for indoor LED lighting applications
- Waterproof grade: IP20
- 5 years warranty

Safety & Warnings

- DO NOT install with power applied to device.
- DO NOT expose the device to moisture.

Wiring Diagram



Operation

1. Do wiring according to connection diagram correctly.

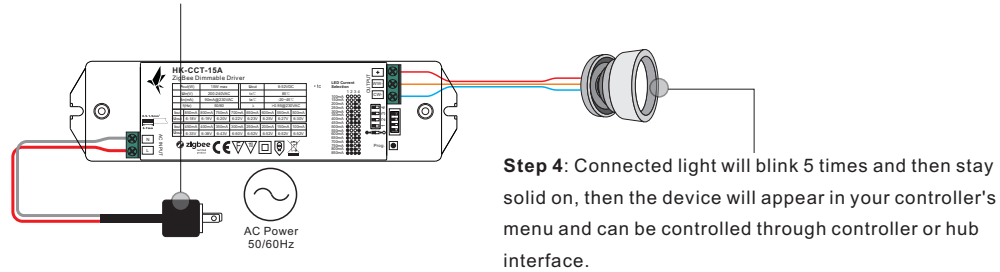
2. This ZigBee device is a wireless receiver that communicates with a variety of ZigBee compatible systems. This receiver receives and is controlled by wireless radio signals from the compatible ZigBee system.

3. Zigbee Network Pairing through Coordinator or Hub (Added to a Zigbee Network)

Step 1: Remove the device from previous zigbee network if it has already been added to, otherwise pairing will fail. Please refer to the part "**Factory Reset Manually**".

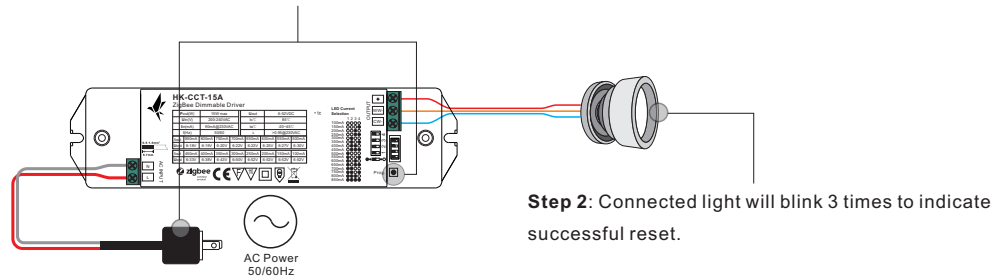
Step 2: From your ZigBee Controller or hub interface, choose to add lighting device and enter Pairing mode as instructed by the controller.

Step 3: Reset power of the device to set it into network pairing mode (connected light flashes twice slowly), 15 seconds timeout, repeat this step.



4. Factory Reset Manually

Step 1: Short press "Prog." key for 5 times continuously or reset power of the device for 5 times continuously if the "Prog." key is not accessible.



Note: 1) If the device is already at factory default setting, there is no indication when factory reset again.

2) All configuration parameters will be reset after the device is reset or removed from the network.